



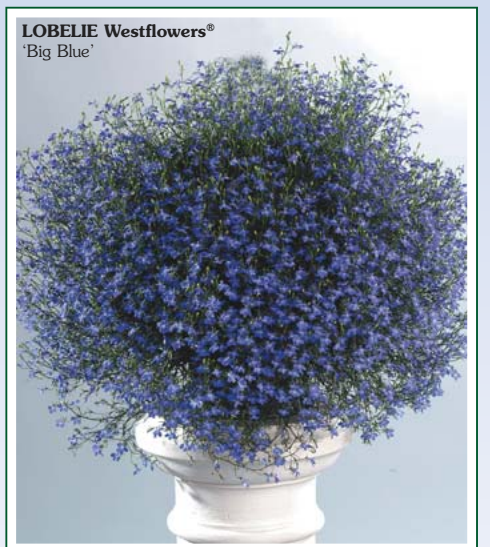
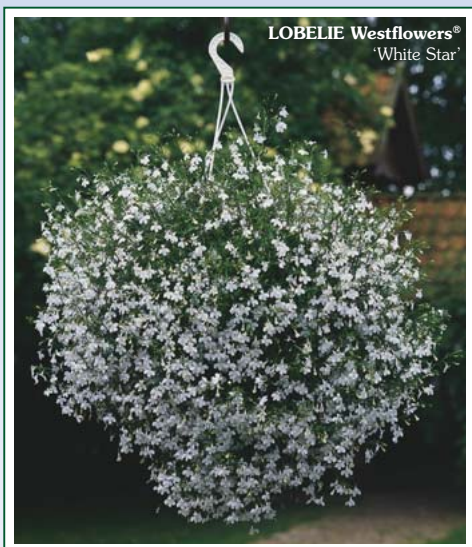



LOBELIA Westflowers®	299	Big Blue - <i>weslobigblue</i>
<p>FLOWER: genziana blue, really big and very numerous.</p> <p>LEAF: medium, long, light green.</p> <p>GROWTH: medium strong, excellent branching cushion shape.</p> <p>TIPS: excellent to couple with other colors.</p>		
		
Growth retardant	Growth	Earliness


LOBELIA Westflowers®	297	Bavaria - <i>wesloba</i>
<p>FLOWER: genziana blue with white eye.</p> <p>LEAF: big, long, dark green.</p> <p>GROWTH: medium strong, excellent branching cushion shape.</p> <p>TIPS: excellent to couple with other colors.</p>		
		
Growth retardant	Growth	Earliness

LOBELIA Westflowers®	300	Blue Star - <i>wesstar</i>
<p>FLOWER: blue, big.</p> <p>LEAF: medium size, rounded, light green.</p> <p>GROWTH: medium strong, excellent branching cushion shape.</p> <p>TIPS: excellent to couple with other colors.</p>		
		
Growth retardant	Growth	Earliness

LOBELIA Westflowers®	298	White Star - <i>weslowei</i>
<p>FLOWER: pure white, big and very numerous.</p> <p>LEAF: big, long, dark green.</p> <p>GROWTH: medium strong, excellent branching cushion shape.</p> <p>TIPS: excellent to couple with other colors.</p>		
		
Growth retardant	Growth	Earliness



LYSIMACHIA	261	Giallo Oro
<p>FLOWER: gold yellow, simple.</p> <p>LEAF: normal green.</p> <p>GROWTH: creeping growth habit, good branching.</p>		
		
Growth retardant	Growth	Earliness

LYSIMACHIA	260	Midnight Sun - <i>Midnight Sun</i>
<p>FLOWER: intensive yellow, simple.</p> <p>LEAF: red, bronze leaves.</p> <p>GROWTH: creeping growth habit, good branching.</p> <p>TIPS: interesting for the red leaves during all summer and yellow flowering in spring.</p>		
		
Growth retardant	Growth	Earliness